

# SEATTLE-TACOMA INTERNATIONAL AIRPORT

A few pictures taken at  
Washington state's biggest airport on a cloudy June morning



Delta Boeing 767 and Horizon Dash 8-100 taxiing  
and TWA MD-80 taking off



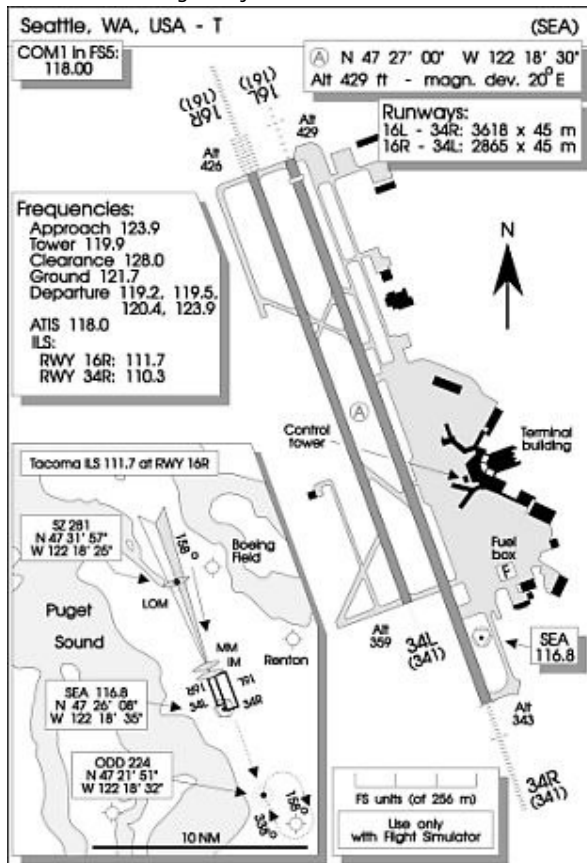
A set of Horizon Fokker F28s awaiting passengers



Northwest DC-10 taking off RWY 16L



Alaska Boeing 737 taxiing to RWY 16L,  
 Horizon Fokker F28 just landed RWY 16R and taxiing to gate,  
 Southwest Boeing 737 just after take off



Situation map over SEATAC (for use in Flight Simulator only)

It's an at first surprising sight to see two aircraft almost side by side on final to what you believe to be the same runway. Landings at SEA can take place simultaneously on both parallel runways. But usually -of course- take-offs on one, landings on the other. But it's a way to handle heavy incoming load.

Visit SEATAC's home page: [www.seatac.org/seatac](http://www.seatac.org/seatac)  
 Visit Horizon Air on the Internet: [www.horizonair.com](http://www.horizonair.com)

(1999-Aug)